



SOUTHERN GEORGIA
REGIONAL COMMISSION

REGIONAL SERVICES • COMMUNITY FOCUSED

ANNUAL REPORT | FY2020

The Southern Georgia Regional Commission (SGRC) is a regional planning and intergovernmental coordination agency which serves 45 municipalities and 18 counties in Southern Georgia. For more than 57 years, the SGRC has provided a comprehensive array of services and resources in response to the needs of member local governments. SGRC has a dedicated staff of over 60 professionals, including technical experts in a number of specialized fields. The SGRC utilizes its valuable combination of commitment, passion, and expertise to benefit our communities and partner agencies through programs that improve the quality of life in Southern Georgia.

MISSION STATEMENT

To develop, promote, and provide services that make the Southern Georgia region a better place to live and work.

Regional Services · Community Focused

SGRC REGION

Atkinson, Bacon, Ben Hill, Berrien, Brantley, Brooks, Charlton, Clinch, Coffee, Cook, Echols, Irwin, Lanier, Lowndes, Pierce, Tift, Turner, and Ware Counties

EXECUTIVE DIRECTOR

Lisa Cribb

ASSISTANT EXECUTIVE DIRECTOR

Chris Strom

OFFICE ADDRESSES:

Valdosta Office
1937 Carlton Adams Drive
Valdosta, Georgia 31601
(229) 333-5277

Waycross Office
1725 South Georgia Parkway, West
Waycross, Georgia 31503
(912) 285-6097

WEBSITE

www.sgrc.us





A MESSAGE FROM CHAIRMAN JOYCE EVANS

On behalf of the Southern Georgia Regional Commission council and staff, I am pleased to present the FY2020 Annual Report. This report documents the accomplishments of the Lending, Community and Economic Development, Planning and Government Services, Transportation and Environmental, Workforce Development, Area Agency on Aging, GIS, Finance, and Information Technology divisions during the previous fiscal year. Despite the numerous challenges posed by the unprecedented Coronavirus pandemic, the SGRC staff rose to meet them to continue serving our local governments and their constituents.

As you review this annual report, it will be evident that each division of the SGRC is providing a variety of valuable professional services to meet the myriad of needs throughout the region. The Lending division participated in 170 CARES Act Paycheck Protection Program (PPP) loans to businesses totaling \$9.4 million. The Community and Economic Development division garnered over \$8.7 million in grant funds. In response to COVID-19, the Planning and Government Services division drafted a model ordinance to assist local governments in addressing outdoor restaurant seating. Over 38,000 trips were provided to senior citizens through the Transportation and Environmental division. The Workforce Development division provided services to 1,404 adults, youth, and dislocated workers. The Area Agency on Aging provided more than 302,000 congregate and home delivered meals to seniors in the region. A COVID-19 Regional Information Hub was designed and maintained by the GIS division to provide up-to-date information about the virus infection rate as well as valuable resources for citizens seeking assistance during the pandemic. The Finance division oversaw revenues in excess of \$14.6 million.

To further the SGRC's ability to serve its local governments, construction of a new 15,000 square foot facility in Valdosta commenced in October 2019. The state-of-the-art facility is slated to be complete soon, and the SGRC staff is excited to call the new building their home.

Even though fiscal year 2020 was fraught with the unexpected trials of the pandemic, it was also a year full of many successes for the Southern Georgia Regional Commission. These successes are the direct result of the hard work of the SGRC staff who are dedicated to serving the 18 counties and the 45 municipalities in the region. This commitment to excellence will be carried into the coming year, positioning the SGRC to address the new opportunities and challenges that arise.

LENDING | FY2020

The SGRC's Lending division provides financing to small business owners for development of new businesses or expansion of existing businesses through several different loan programs. Lending is setup as two separate non-profit agencies governed by one Loan Board of Directors. The Southern Georgia Area Resource Development Agency (ARDA) operates an over \$6 million-dollar EDA/USDA Rural Development funded revolving loan fund (RLF) and the Southern Georgia Area Development Corporation (ADC) is a Certified Development Corporation with the Small Business Administration charged with making SBA 504 loans for commercial businesses and packaging SBA 7(a) Guaranteed loans on behalf of local lending institutions.

11 Loans from Traditional Programs
(5 SBA 504, 2 SBA 7A, 4 RLF)

\$18,821,916



181 Loans

\$28,309,783

170 CARES Act Paycheck
Protection Program (PPP) Loans

\$9,487,867



Private Investment
(without including PPP Loans)

\$12,058,951

SGRC Portion
of all Loans

\$16,250,832



Traffi
GLOVE
SIZE 10
MORPHIC S
EN 388:2003
4B 4 Z

DEWALT
18V XRP L-ION
4.0 Ah

DEWALT
DCF885 TYPE 2
18V MAX 13,200 RPM
1/2" (12.7mm)
DUAL CONTACT
JIS S2 2002
0099003
KEUR
HIC
CE
MADE IN INDONESIA



1301
JOBS CREATED
OR SAVED

INDUSTRIES SERVED

Hotel/Hospitality

Restaurant

Bowling Alley/Entertainment

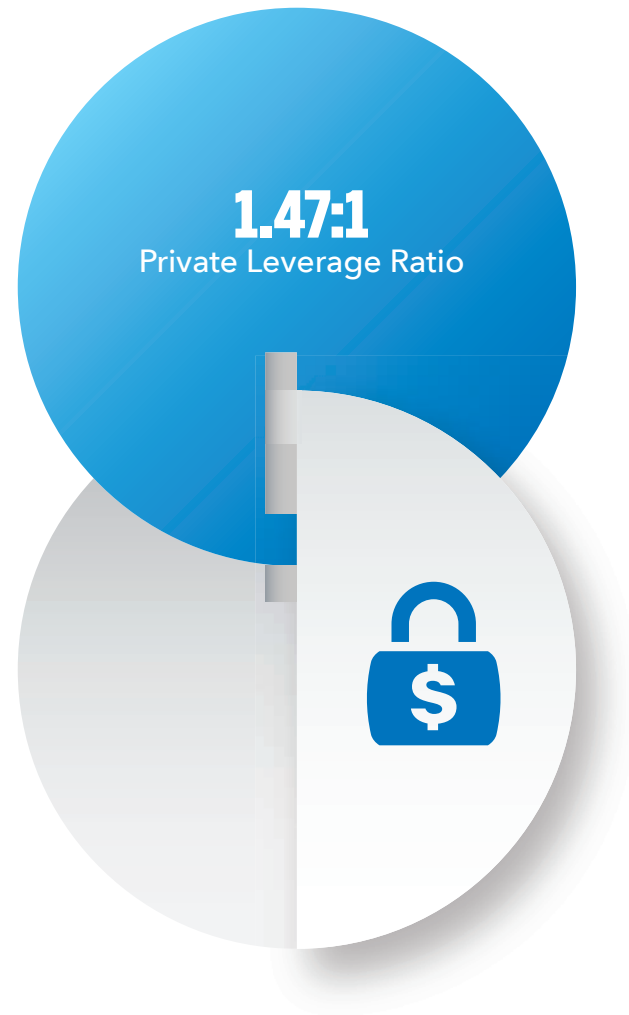
Land Clearing Business

Modular Home Manufacturer

Agritourism Retail Store

Mini Storage Facilities

Medical Professional Office



The SGRC's Community and Economic Development division provides technical assistance to local governments in identifying projects to improve community programs and facilities, developing related grant and loan applications, and administering funded projects. Community and Economic Development activities are designed to promote regional economic development, to assist local communities in increasing their economic development capacity, to identify funding to assist with the location and expansion of new and existing industry, and to facilitate activities which encourage business development and job creation in order to enhance the standard of living for area residents.

COMMUNITY AND ECONOMIC DEVELOPMENT | FY2020

ALL GRANTS RECEIVED IN FY20

(9 Community Development & 4 Economic Development)



* With private investment

FY20 PROJECT ADMINISTRATION: 43 PROJECTS

Street Paving & Drainage

11

Water

4

Sewer

3

Rail

1

Housing

10

Multi-Infrastructure

8

Public Facilities

4

Public Works Equipment

1

Pedestrian Facilities

1

TOTAL GRANT AMOUNT

\$23,673,970

TOTAL PROJECT AMOUNT

\$227,036,473

FY20 PROJECT ADMINISTRATION: 43 GRANTS BY PROGRAM

Community Development Block Grant (CDBG)

22

CDBG-Employment Incentive Program

4

CDBG-Redevelopment Fund

1

EDA Public Works

1

OneGeorgia Equity

6

USDA Community Facilities

1

Community HOME Investment Program (CHIP)

7

Transportation Enhancement

1

FUNDING AGENCIES

Georgia Department
of Community Affairs

Economic Development
Administration

United States Department
of Agriculture

Georgia Department
of Transportation

The SGRC's Planning and Government Services division assists local governments in completing comprehensive plan updates, drafting local development regulations, updating Hazard Mitigation Plans, and providing other specialized planning studies. In addition, planning staff assists with needs identified in adopted Community Work Programs and by hosting training and development workshops. Planning and Government Services provides information and public policy options to local governments based on sound research and analysis. Through continuous outreach, this division helps local governments maintain Qualified Local Government status which allows them to receive state and federal funding. Planning activities focus on fulfilling community and regional visions and goals as well as protecting the region's environmental and cultural resources.

PLANNING AND GOVERNMENT SERVICES | FY2020

COMPREHENSIVE PLAN UPDATES AND AMENDMENTS

COMPREHENSIVE PLAN UPDATES COMPLETED

2

Berrien County and the Cities of Nashville, Ray City, Enigma, and Alapaha

Cook County and the Cities of Adel, Cecil, Lenox, and Sparks

COMPREHENSIVE PLAN UPDATES IN PROGRESS

2

Echols County
Charlton County and the Cities of Folkston and Homeland

COMPREHENSIVE PLAN AMENDMENTS COMPLETED

2

Ben Hill County and the City of Fitzgerald Added a Broadband Element

Charlton County Added a new Work Program Item

COMPREHENSIVE PLAN UPDATE AND AMENDMENT ACTIVITIES

22

10 Public Hearings

12 Workshops

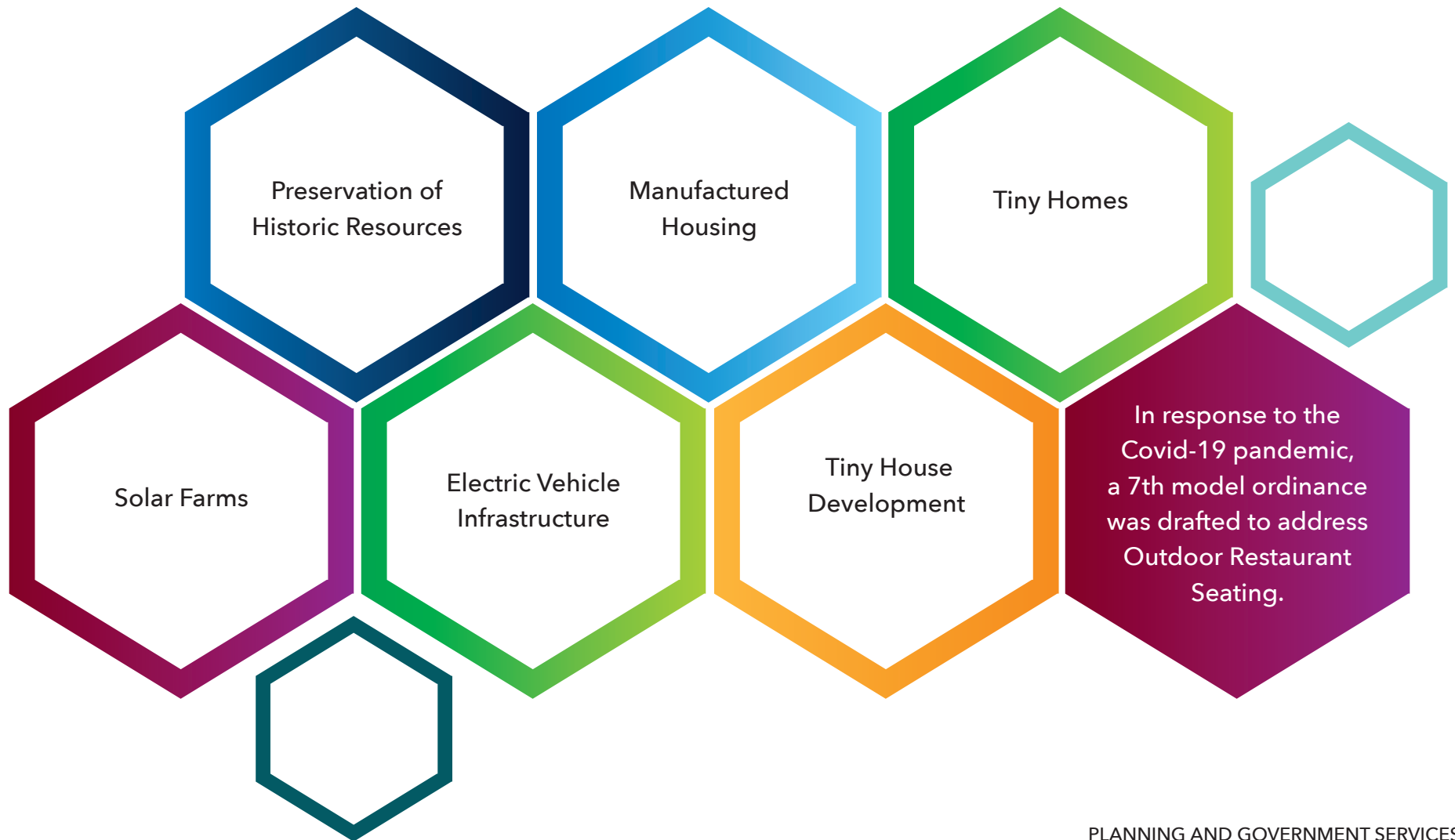
COMPREHENSIVE PLAN IMPLEMENTATION ASSISTANCE

24 Local Governments received Comprehensive Plan Implementation Assistance

MODEL ORDINANCES AND MODEL ORDINANCE WORKSHOP

SGRC planning staff drafted six (6) model ordinances, and presented them during an afternoon workshop held on February 19, 2020.

The topics for the 6 model ordinances included:



ECOTOURISM GUIDE

Planning and GIS staff worked together to create a regional ecotourism guide with a dedicated website:
www.sgrcmaps.com/ecotourism

The ecotourism guide includes an interactive map of ecotourism resources throughout the 18-county region.

- Boat Ramps
- Water Bodies
- State Parks
- Wildlife Refuges
- Preserves/Hunting Areas
- Public Fishing Areas
- Regional Recreation Areas
- Lodges
- Nature Trails
- Education Centers
- Off Road Parks
- RV Parks/Campgrounds



Quiet Creeks, Peaceful Pines, & Dark Skies

Visit www.sgrcmaps.com/Ecotourism for an interactive map.

sgrc SOUTHERN GEORGIA REGIONAL COMMISSION
www.sgrc.us



1 Flat Top Wildlife Management Area
This WMA is open for hunting for deer, turkey, squirrel and waterfowl. River fishing and wildlife viewing are also popular activities.
GA 107, North Coffee County • 229-426-5267
www.georgiawildlife.com/flat-top-wma



2 Broxton Rocks Preserve
Nature preserve complete with a waterfall, caves and rare plant life. The property is owned by the Nature Conservancy, and reservations are required for hiking tours. www.nature.org/en-us/get-involved/how-to-help/places-we-protect/broxton-rocks



3 Milton "Buddy" Hopkins Nature Preserve
Bird watchers come to this 1-mile boardwalk loop around a grassy wetland area to see approximately 100 different species of birds. Appomattox Rd, Fitzgerald • www.fitzgeraldga.org/birdwatching



4 General Coffee State Park
The park is known for agricultural history at Heritage Farm, with log cabins, a tobacco barn and other exhibits. Children enjoy feeding the park's farm animals, which usually include goats, sheep, chickens, pigs, and donkeys. John Coffee Road, Nicholls 912-384-7082 • www.gastateparks.org/gmcrakcoffee

5 Georgia Museum of Agriculture and Historic Village
The grounds consist of five areas: a traditional farm community of the 1870s, an 1890s progressive farmstead, an industrial sites complex, rural town, national peanut complex, and the Museum of Agriculture Center. Costumed interpreters explain and demonstrate the lifestyle and activities of this time in Georgia's history. Whiddon Mill Rd, Tifton 229-391-5205 • gma.abac.edu



6 Paradise Public Fishing Area
Story lakes totaling 525 acres, provide excellent boat and bank fishing. Paradise PFA offers a relaxed setting for families and solitary anglers alike. Paradise Drive, Enigma www.georgiawildlife.com/paradise-pfa



7 Mossy Pond Lodge
Provides quail and pheasant hunts, sporting clay shoots and lodging. Mayberry Rd, Patterson 912-288-1549 • www.mossypondretreivers.com/mossy-pond-outfitters

8 Little Satilla Wildlife Management Area
Comprised of 18,920 acres and located only an hour away from the Atlantic Ocean, Little Satilla Wildlife Management Area is known for its diverse landscapes and excellent hunting opportunities. Hunting opportunities include deer, turkey, waterfowl and small game. GA 32, East of Patterson • 912-262-3173

9 Gaskin Forest Education Center
Privately owned conservation reserve nestled on nearly five thousand acres of pine trees bordering the 202-mile-long Apalaha River. Moore Sawmill Rd, Alapaha • 229-339-3066

10 Gopher Plantation
The Gopher Plantation offers diverse topography that provides an optimum wildlife habitat. Intensive management has created an abundance of wildlife seldom available to the public. It creates a touch of heaven to the hunter after being micro-managed for over 35 years. Gopher Ln, Millwood • 912-284-1722 www.gopherplantation.com



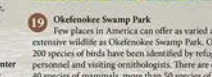
11 Moccasin Creek Off Road Park
Family oriented off road park where you can ride your ATV/UTV/Golf Carts over 500 acres and 8 miles of maintained trails. The park has trails ranging from just muddy enough to get your tires dirty to challenging trails that test your skills. Wilson Rd, Blackshear • 912-281-5842 www.moccasincreekoffroad.com/home



12 Shadow Oak Plantation
Hunting lodge that serves small and intimate groups of avid quail and upland bird enthusiasts on traditional plantation-style quail hunts. For photography enthusiasts and non-hunting guests, the plantation offers a mini-safari of exotic animals including peacocks, ostrich, emu, zebra, antelope, wolverine, Watusi cattle, buffalo, fallow and red deer. June Hendley Rd, NE of Nashville 229-686-7454 • www.shadowoakplantation.com



13 Southern Forest World Environmental Center
Museum dedicated to the history of forestry. 29 August Ave, Waycross • 912-285-4056 www.southernforestworld.com



14 Reed Bingham State Park
A 375-acre lake popular with boaters and skiers. Activities include rental bicycles, canoes and kayaks. Evergreen Church Rd, off of GA 37, West of Adel 229-896-3551 • www.gastateparks.org/ReedBingham



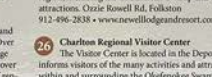
15 Laura Walker State Park
Laura S. Walker State Park is a 626-acre Georgia state park located near Hoboken and the Okefenokee Swamp. The park is named after Laura S. Walker, a Georgia writer, teacher, civic leader, and naturalist. GA 177, E. of Waycross • 912-287-4900 www.gastateparks.org/LauraWalker



16 The Ford Farm
The Ford Farm is a quiet refuge for nature lovers and quail hunters alike. The farm offers eight hunting courses and lodging as well. 414 Cross Creek Rd, Lakeland • 229-569-1791 • www.thefordfarm.com

17 Obediah's Okefenokee
Obediah's Okefenokee is the restored homestead of Obediah Barber, an early settler of the area. The park offers a glimpse into the frontier lifestyle of the late 1800's (Open Friday - Sunday Only) 5115 Swampy Rd, Waycross • 912-287-0090 www.okefenokee.com

18 Dixon Memorial Wildlife Management Area
The Dixon Memorial Wildlife Management Area provides hunting and shooting opportunities as well as geocaching and wildlife viewing. The state-owned property consists of upland pine forest and cypress gum wetlands. 5000 Check Station Rd, Waycross • 229-426-5267 www.georgiawildlife.com/dixon-memorial-wma



19 Okefenokee Swamp Park
Few places in America can offer as varied and extensive wildlife as Okefenokee Swamp Park. Over 200 species of birds have been identified by refuge personnel and visiting ornithologists. There are over 40 species of mammals, more than 50 species of reptiles, and 60 species of amphibians. The waters here an abundance of fish, 34 different kinds. US 1 South, Waycross • 912-281-0583 www.okefenokeeswamp.com



20 Possum Creek Off Road Park
Possum Creek Off Road Park caters to ATVs, UTVs, Jeeps, Trucks, etc. They are open the 2nd and 4th weekend of each month. Camping is provided. 2694 Possum Creek Rd, Ray City • 229-563-3023



21 Live Oak Plantation Lodge
The Live Oak Plantation Lodge is located on 3,000 acres of managed wildlife habitat. The plantation offers deer shooting, hunting, fishing, and golf to visitors and guests. 675 Plantation Rd, Adel 800-682-HUNT • www.huntliveoak.com

22 Banks Lake National Wildlife Refuge
Banks Lake is a shallow blackwater lake containing cypress swamps, freshwater marsh, uplands, and open water. Fishing, paddling, wildlife viewing, and boat rentals are available to visitors at the Banks Lake NWR. GA Hwy 122, Lakeland • 229-669-0147 www.fws.gov/refuge/banks_lake

23 Robert Simpson Nature Trail
Visitors to the Robert Simpson Nature Trail can view plant life, natural bogs and experience fishing on Lake Irma. The Nature trail abuts the mountain bike trail. N Temple St, Lakeland • 229-482-9755 www.lakelandchamber.org/parks-trails



24 Grand Bay Wildlife Management Area
The Grand Bay Wildlife Management Area encompasses 2,623 acres of state-owned property and 5,874 acres of land under license from the U.S. Air Force. The area consists of upland pine/hardwood forest and cypress/gum wetlands with opportunities for hunting, geocaching, canoeing, hiking, and fishing. Knights Academy Rd, Valdosta • 229-426-5267 www.georgiawildlife.com/grand-bay-wma



25 Newell Lodge & Resort
The Newell Lodge & Resort offers guests horse-back riding, hay rides, wildlife viewing, and relaxation. It is centrally located to multiple sites in the region, including the Okefenokee Swamp and coastal attractions. Ozark Rowell Rd, Folkston 912-496-2838 • www.newelllodgeresort.com



26 Charlton Regional Visitor Center
The Visitor Center is located in the Depot and informs visitors of the many activities and attractions within and surrounding the Okefenokee Swamp. 3795 Main St, Folkston • 912-496-2536 www.charltoncountyparks.us/26/Visitor-Center

27 Stephen C. Foster State Park
Stephen C. Foster is a remote park, located within the Okefenokee Swamp is a shallow peat-filled bog which encompasses 438,000 acres along the Georgia/Florida line. The State Park offers visitors opportunities to fish, canoe/kayak, star gaze, hike, geocache, bike, and view wildlife. Hwy 177 Jargo 912-637-5274 • www.gastateparks.org/StephenFoster

28 Okefenokee National Wildlife Refuge
The Okefenokee National Wildlife Refuge has 353,981 acres of National Wilderness Area within refuge boundaries. In addition, the refuge is a Wetland of International Importance as it is one of the world's largest intact freshwater ecosystems. Visitor activities include wilderness canoeing, wildlife viewing, hunting, boat tours, fishing, and environmental education. 11 miles SW of Folkston, off Hwy 121/223 912-496-7836 • www.fws.gov/refuge/okefenokee

29 Grassy Pond
Grassy Pond is a daily recreational park operated by Moody Air Force Base that is open to the public. The 500 acre park contains several amenities for visitors, including nature trails, boating, fishing, playgrounds, beach volleyball, and basketball. 5300 Grassy Pond Rd, Lake Park 229-559-5840 • www.moodyafb.com/grassy-pond

30 Soggy Bottom Mud Park
Soggy Bottom is a 180 acre outdoor recreation park with amenities including fishing, swimming, hiking, bicycling, wildlife viewing, and off road riding/racing. 1000 Hwy 121, St. George • 904-786-5503 www.soggybottom.com

Visit www.sgrcmaps.com/WaterTrails for a map of boat ramps along South GA waterways

RV Parks and Campgrounds

- 1 Paulk Park RV Park 229-426-9009
- 2 Paradise Lake RV Park 229-388-3481
- 3 Tifton KOA 229-386-8911
- 4 Cecil Bay RV Park 229-794-1484
- 5 Cain's Creekside RV Park 229-794-7416
- 6 Big Mike's RV Camp 912-487-2643
- 7 Valdosta Oaks RV Park 229-247-0494
- 8 River Park RV Park 229-568-4352
- 9 Griffin Fish Camp 912-637-5289
- 10 Trader's Hill Campground 912-496-5412
- 11 Pastimes Cabins, RV Park 912-496-4172
- 12 Lake Park Campground & RV Park 229-559-6555
- 13 Eagle's Roost RV Resort 229-559-5192

SOUTHERN GEORGIA ECOTOURISM GUIDE



1 COUNTY AND 1 CITY

HAZARD MITIGATION PLANS

Through a series of four meetings, Hazard Mitigation Plans were completed for Ben Hill County and the City of Fitzgerald.

PLANNING & ZONING TECHNICAL ASSISTANCE

Planning & Zoning Technical Assistance provided to seven local governments. Activities included:



Staff Reports



Presentation of Zoning Cases



Planning Guidance



Site Plan Review

ADDITIONAL TECHNICAL ASSISTANCE

- City of Adel - Adoption of an Urban Redevelopment Plan & Enterprise Zone
- City of Nicholls - Adoption of a Zoning Ordinance
- City of Quitman - Update to Zoning Ordinance and Map



The SGRC's Transportation and Environmental division serves local governments in planning activities, delivering vital transportation services to clients, and promoting activities that both protect and promote the region's natural resources. The SGRC is the federally-designated Metropolitan Planning Organization for the Valdosta Urbanized Area, carrying out various long- and short-range transportation planning activities around metropolitan Valdosta. This division also provides transportation planning services to rural counties in the region that are primarily focused on rural transit and bicycle/pedestrian infrastructure planning. The Coordinated Human Service Transportation Program serves, on average, 500 trips per day for clients of GA Department of Human Services and other state agencies. The Environmental program partners with the GA DNR-Environmental Protection Division, local governments, and private landowners to develop and implement water quality best management practices along rivers and streams throughout the region.

TRANSPORTATION AND ENVIRONMENTAL | FY2020

COORDINATED TRANSPORTATION





DOCUMENTS PRODUCED

Vision2045 Valdosta-Lowndes Metropolitan
Transportation Plan

FY2020 Lowndes County Annual Crash Report

Douglas Sidewalk Master Plan

Valdosta-Lowndes MPO Complete
Streets Policy

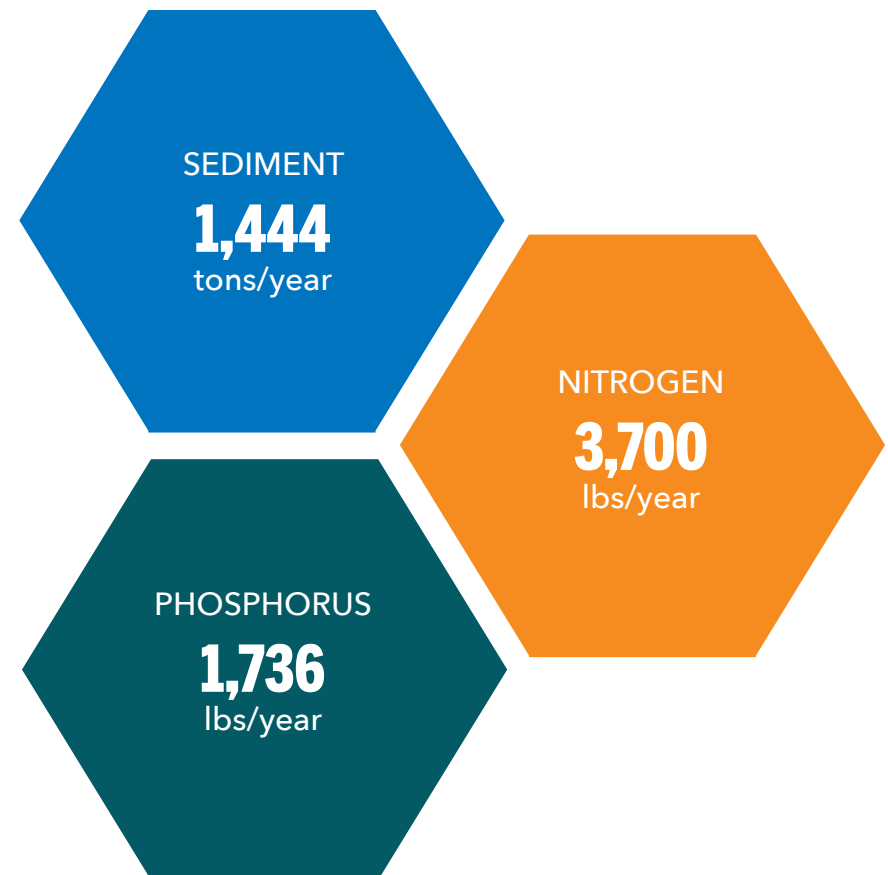
School Area Crash Trend Reports:
Echols, Cook, Charlton, Lowndes Counties

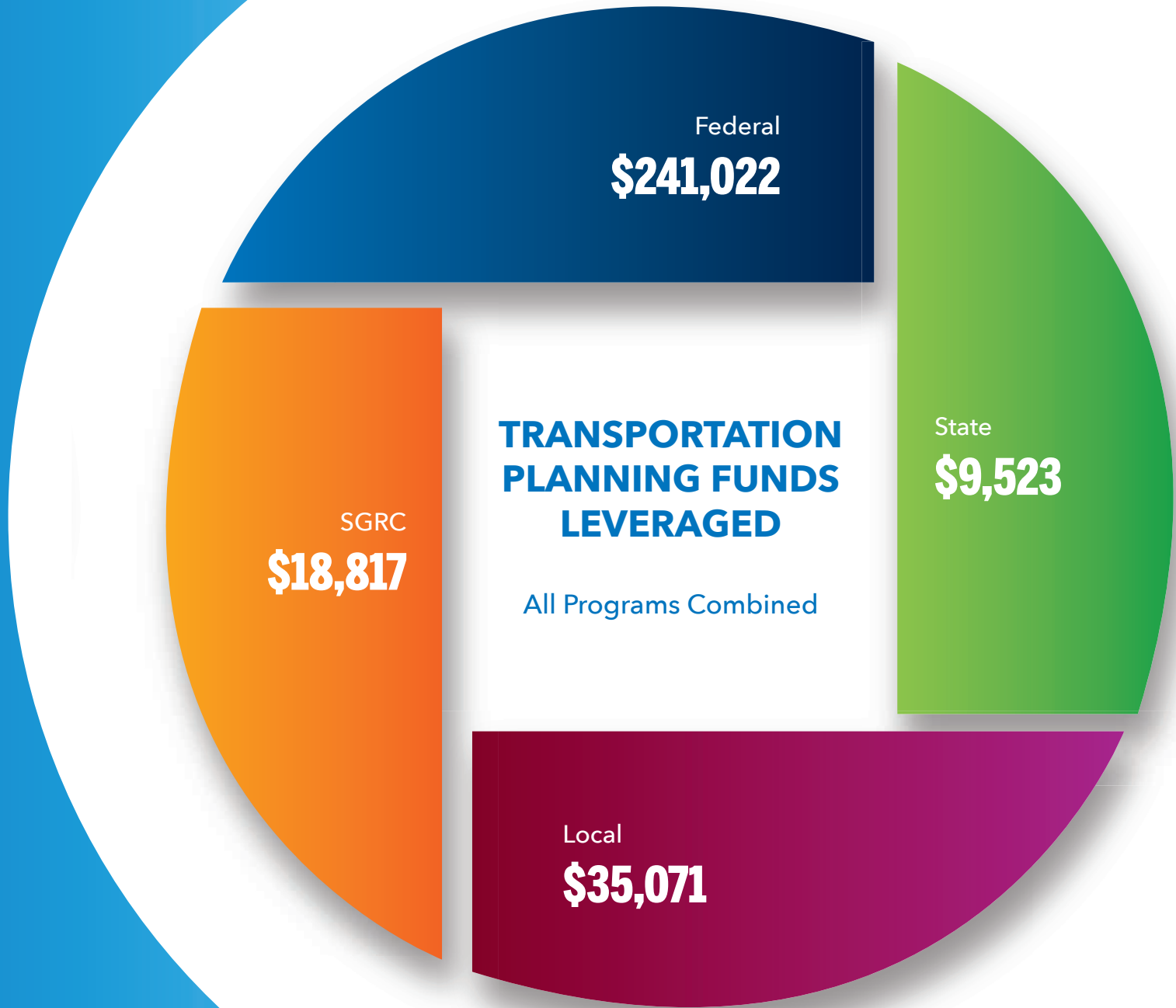




New River Watershed Improvement Program

- Implementation of Best Management Practice (BMP) Estimated Load Reductions of sediment, nitrogen, and phosphorus, all of which lead to potential water quality impairments, in the New River Watershed.
- Two projects, totaling \$129,000 in federal and private funds, resulted in these load reductions:





**TRANSPORTATION
PLANNING FUNDS
LEVERAGED**

All Programs Combined

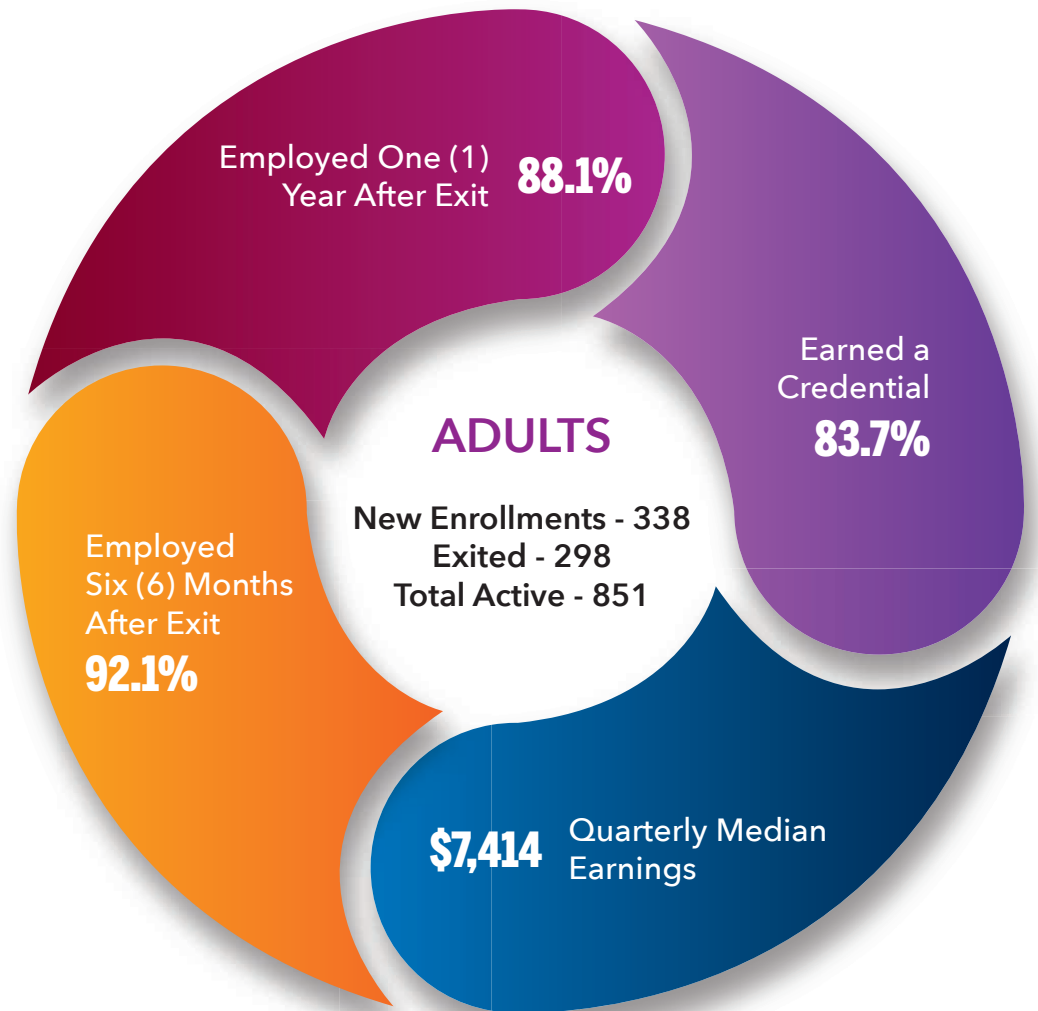
The SGRC's Workforce Development division's vision is to empower Southern Georgia employers, individuals, and communities to prosper and grow the region's economy through a workforce development system that is inherently customer-centered, seamless, and effective. This division administers the federally funded Workforce Innovation and Opportunity Act (WIOA) program. WIOA is landmark legislation that is designed to (1) strengthen and improve our nation's public workforce system, (2) help get Americans, including youth and those with significant barriers to employment, into high-quality jobs and careers and (3) help employers hire and retain skilled workers.

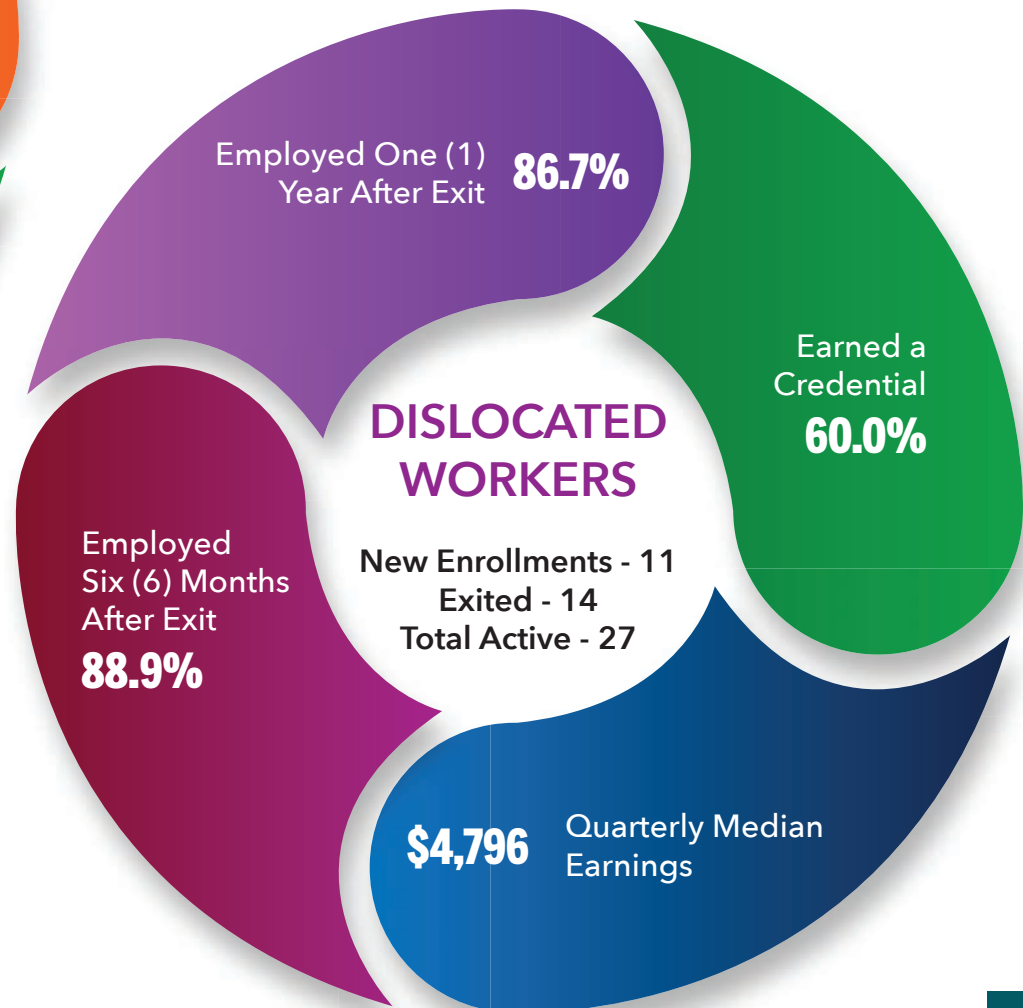
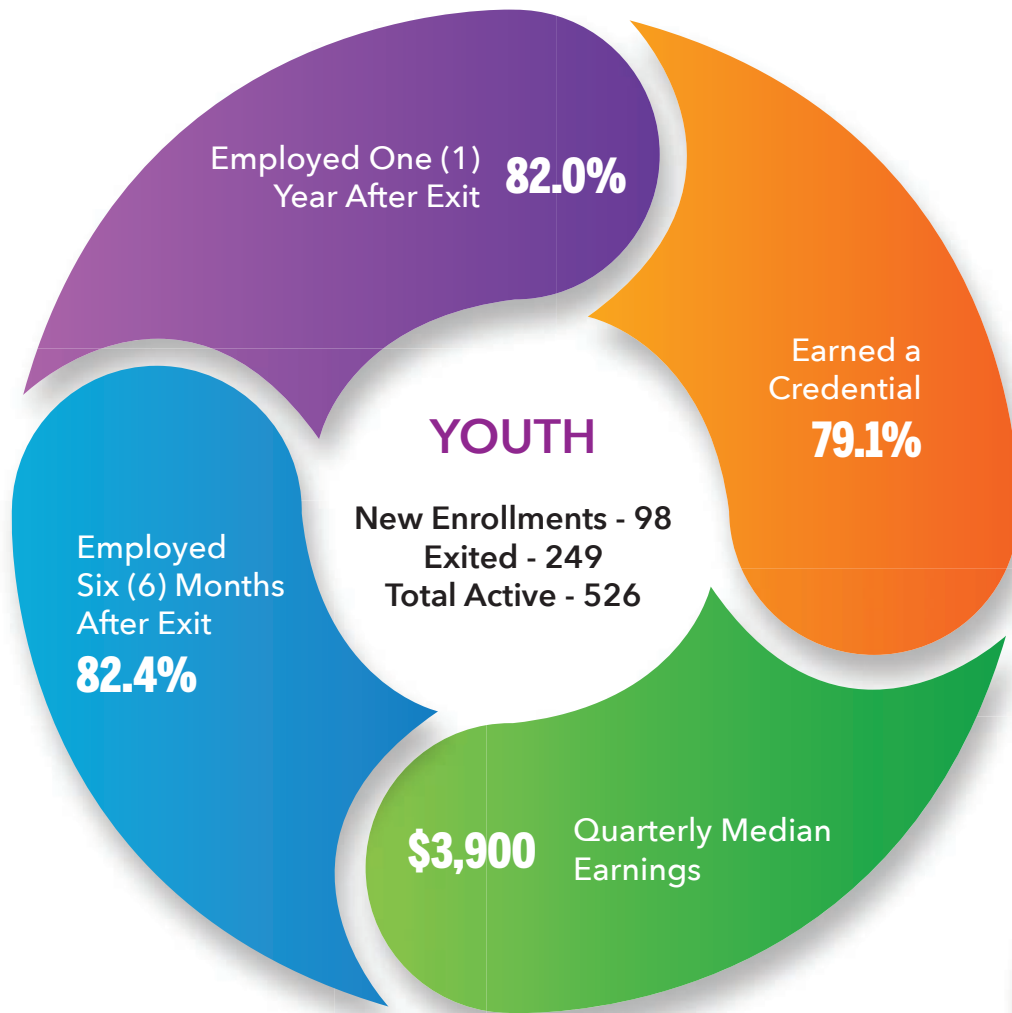
WORKFORCE DEVELOPMENT | FY2020





PERFORMANCE OUTCOMES





AREA AGENCY ON AGING | FY2020

The SGRC's Area Agency on Aging (AAA) develops, provides, coordinates, and advocates for services that assist older individuals, at-risk adults, persons with disabilities, their families, and caregivers. The vision of the AAA is to assist these individuals in Living Longer, Living Safely, and Living Well. AAA programs and services receive federal and state funding through a contract between the SGRC and the GA Department of Human Services and between the SGRC and the GA Department of Community Health. While some services are provided by AAA staff, most programs are sub-contracted to cities, counties, and other organizations that contribute local monies to provide services directly in their communities.

AGING AND DISABILITY RESOURCE CONNECTION OUTREACH



INFORMATION DISSEMINATION THROUGH COLLABORATION

Over 1,000 SGRC-AAA Community Resource Flyers were distributed via the Family Connection Collaborative Organizations in the region.

SENIOR HUNGER COALITION ACTIVITIES

400+

400+ seniors attended a Nutrition Health Fair during which 35 community vendors provided information on nutrition and health resources. A Senior Hunger Coalition food drive garnered enough donations that each senior attendee received a bag of nutritious food to take home.

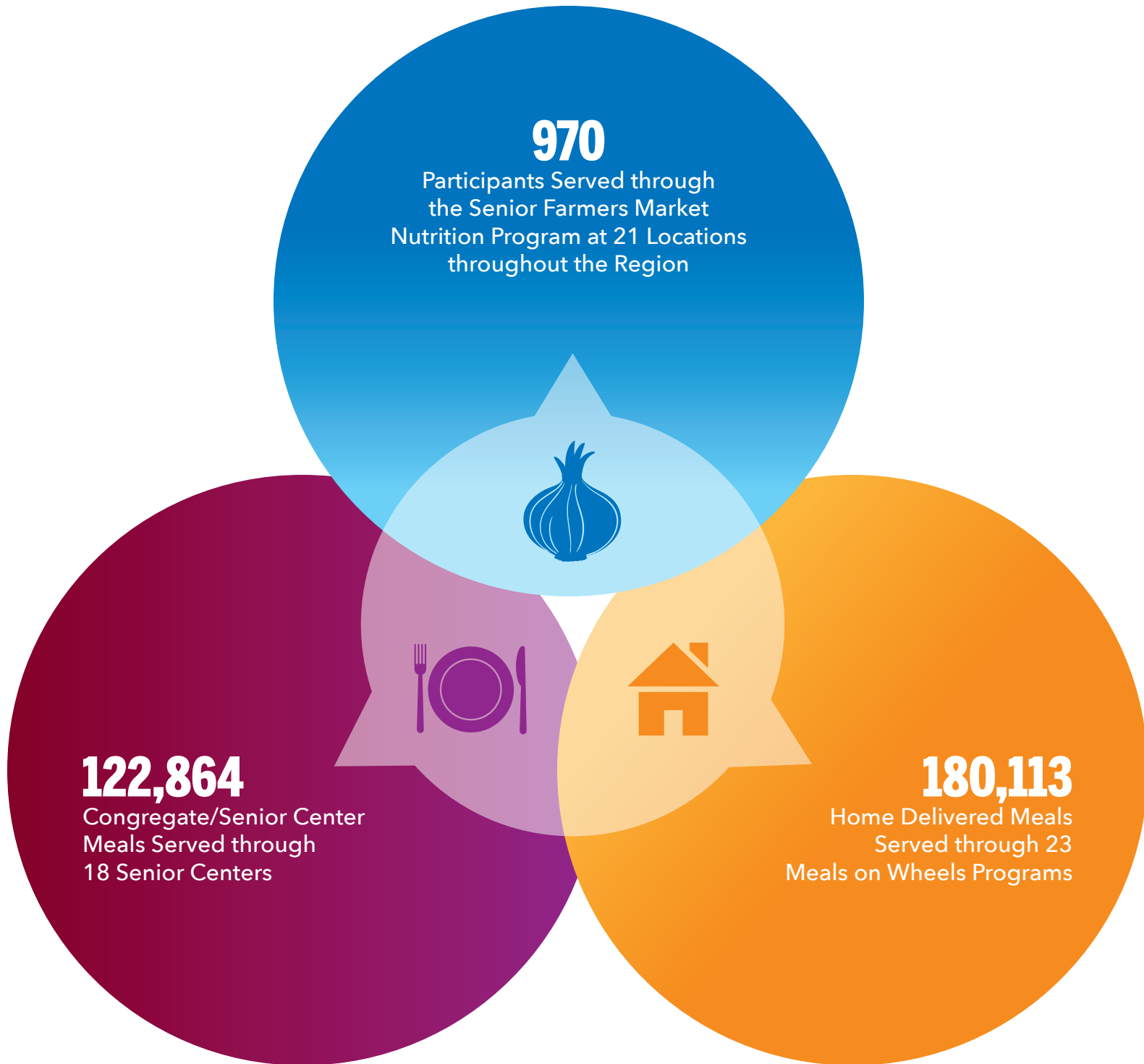
150

Over 150 people attended 9 regional Senior Hunger Coalition meetings that were held in Nashville and Waycross during FY20 - strengthening community partnerships throughout the region.

8,609

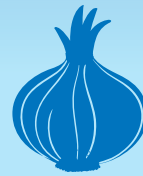
EXPANDED AGING SERVICES

Provided 8,609 Home Delivered Meals to 69 clients in previously un-served areas of Lowndes County.



970

Participants Served through
the Senior Farmers Market
Nutrition Program at 21 Locations
throughout the Region



122,864

Congregate/Senior Center
Meals Served through
18 Senior Centers



180,113

Home Delivered Meals
Served through 23
Meals on Wheels Programs

HOURS PROVIDED



14,076
Respite Care

3,919
Adult Daycare

11,575
Homemaker
Services

11,520
Personal Care



CREATIVE FUNDRAISING

Wear Jeans to Work Fundraiser

Spring Wreath Auction Fundraiser

\$1,851

Collected for Aging Emergency Fund

RAPID RESPONSE TO COVID-19 PANDEMIC

35,527

emergency home-delivered
meals provided to

646

congregate clients while
senior centers were closed

COVID-19 FUNDING FOR AGING SERVICES

\$18,000

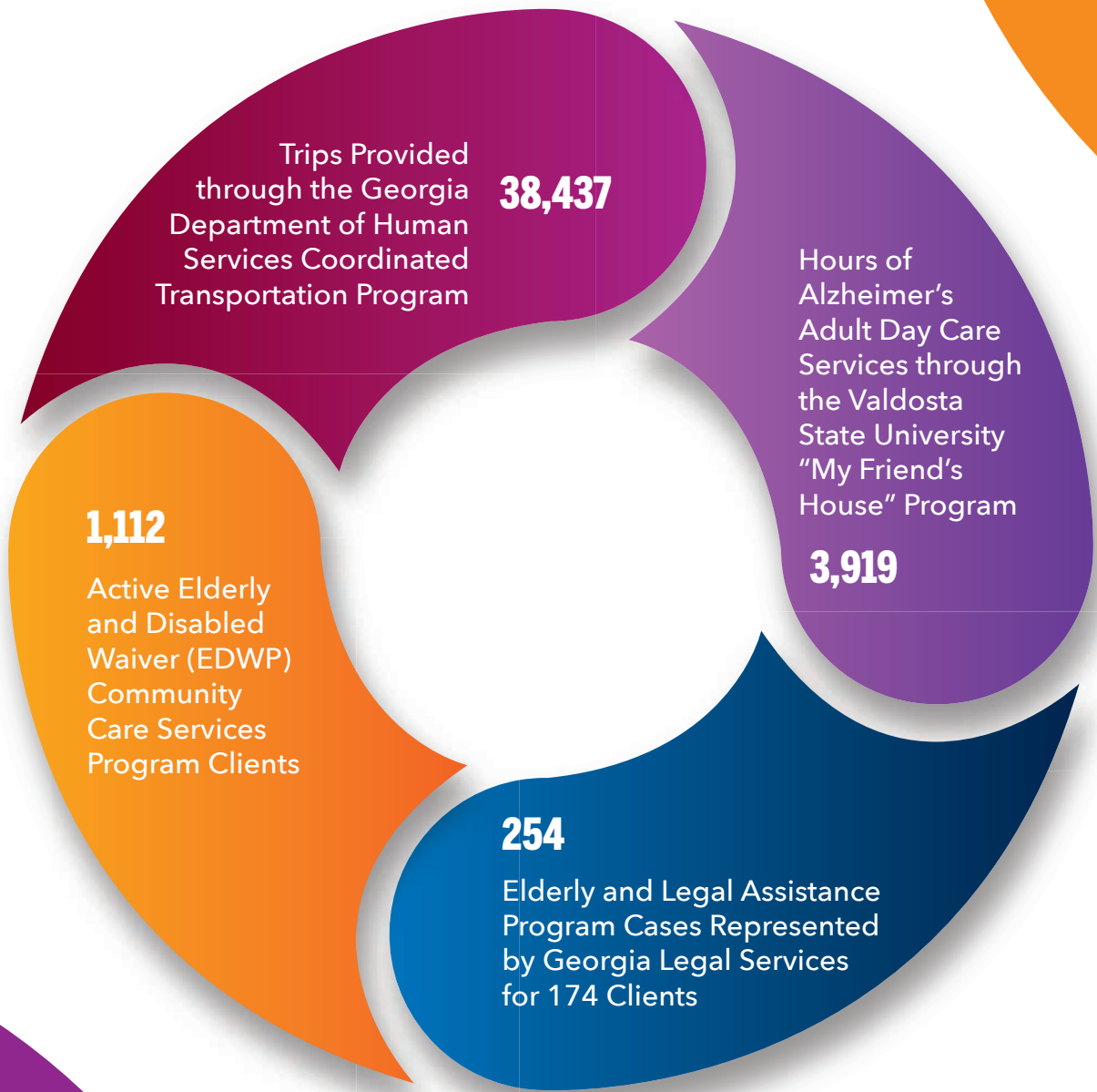
\$18,000 Emergency Fund Grant from the Community Foundation of South Georgia to purchase emergency food, essential items, and personal protective equipment for seniors

\$1,196,648

\$1,196,648 in Coronavirus Aid, Relief, and Economic Security (CARES) Act COVID-19 emergency Federal funding to serve additional clients and provide additional aging services in the region

\$371,434

\$371,434 Families First Coronavirus Response Act (FFCRA) emergency Federal funding for meals



GIS | FY2020

The SGRC's Geographic Information Systems (GIS) division develops and maintains GIS data and applications for governments in Southern Georgia and other areas. GIS technology is all about making better decisions through query and analysis of spatial data and is used extensively in the Southern Georgia region. Local governments utilize GIS technology and data developed by SGRC to handle everything from monitoring growth and parcel assessment to crime analysis and emergency response planning.

GIS EXPANDS SERVICES

Election Districts
School Districts
Zoning

GIS Data and Applications

Crime Analysis
Parcel Value Analysis

Drone Imagery Solutions

Parcel Data
911 Road Data

Hard Copy Maps
Digital Maps
Mobile GIS Solutions

Utility Features
Crime Incidents
Fire Calls
Cemetery Information

EMS Drive Times

ISO Mapping Assistance

GIS Technical Support

COVID-19 REGIONAL HUB

www.sgrcmaps.com/hub

SOCIAL VULNERABILITY
REPORTS

VIDEOS FROM
THE CDC
STATE ORDINANCES

INFORMATIONAL
SOCIAL MEDIA FEEDS

MAP WITH
COMMUNITY AND
NUTRITION RESOURCES
FOR SENIORS

RESTAURANT
STATUS MAP WITH
HOURS AND
DELIVERY

EMOTIONAL SUPPORT
HOTLINE NUMBERS

HOW TO REPORT
COVID-19 FRAUD

DAILY DEPARTMENT
OF PUBLIC HEALTH
REPORTS

APPLYING FOR P-EBT
ECONOMIC & BUSINESS
RESOURCES

GEORGIA SCHOOL
CLOSING INFORMATION

HEALTH DEPARTMENT
CONTACT
INFORMATION

MAP OF CASES
IN SGRC REGION
FAQ ABOUT THE VIRUS

SYMPTOMS AND
SELF-CHECKER

INFORMATION
ON TESTING

USDA MEALS FOR KIDS

GIS

SGRC GIS Assisted with
26 Grant Maps to Benefit
19 Communities

Comprehensive
Plan Maps for
2 Region Counties

Rural Zone
Maps for 2 Cities

**MAPPING
SUPPORT FOR
COMMUNITY
IMPROVEMENT**

Regionwide
Ecotourism Web Map
and Printable Brochure

MAP-21
Mapping approximately
65,000 traffic control
lights and signs



DRONE SERVICES TAKE OFF

Mapping Projects

Major Utility Project in Lowndes County

Utility and Engineering Projects

High-Resolution Headstone Mapping for Sunset Hill Cemetery in Valdosta and Pineview Cemetery in Folkston

Captures of Newly Paved Roads and Construction

3D Mapping and Volume Analysis

WEB MAPS, APPS, AND MOBILE GIS SOLUTIONS

VALOR GIS

30 interactive web maps for 20 different departments in Valdosta and Lowndes County. Departments include Public Works, Engineering, Permitting, Utilities, Fire, Tax Assessor, Emergency Management, EMS, Elections, Transportation, and other city and county governmental needs.

ADMIN SOLUTION

Custom-made admin solution for Sunset Hill Cemetery

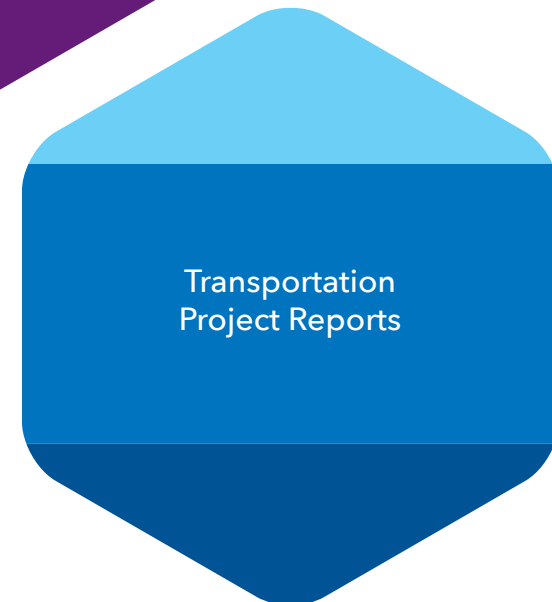
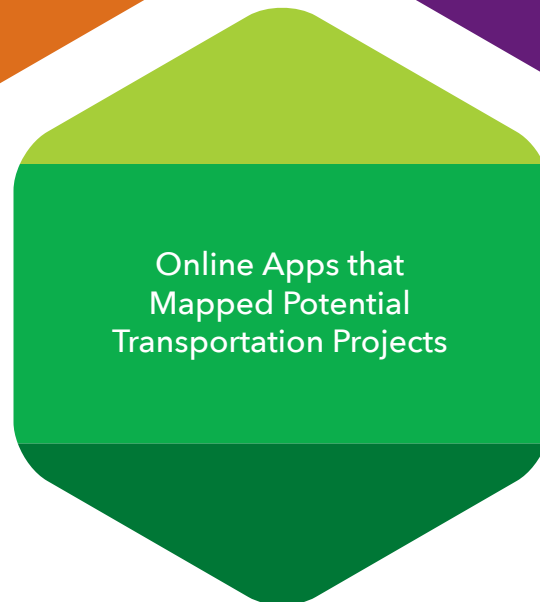
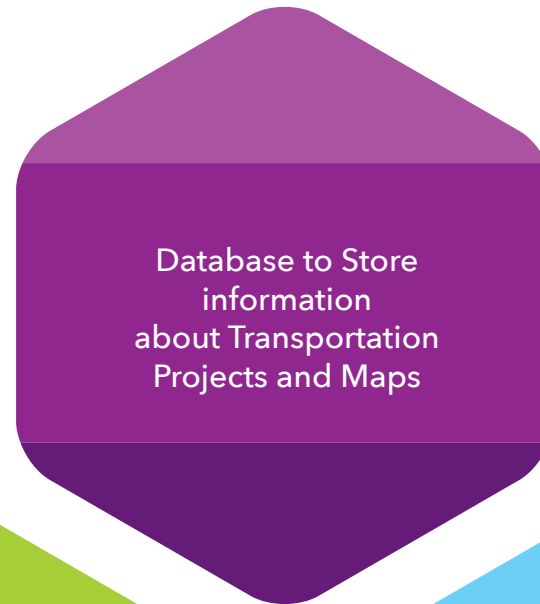
REGION

100 web maps for 21 different communities for Elections, Utilities, Environmental, Transportation, Ecotourism, Public Works, and Emergency Management.

STATE

Three statewide maps and one area-focused web map for the GA Department of Public Health: WelSTROM, Coastal WelSTROM, Chemical Hazards, and Public Facilities.

VISION2045 VALDOSTA-LOWNDES METROPOLITAN TRANSPORTATION PLAN



2020 CENSUS

Local Update of Census Addresses (LUCA) and Boundary Annexation Survey (BAS)

Low Response Zones
Notifications

City Boundary
Updates

Address Appeals

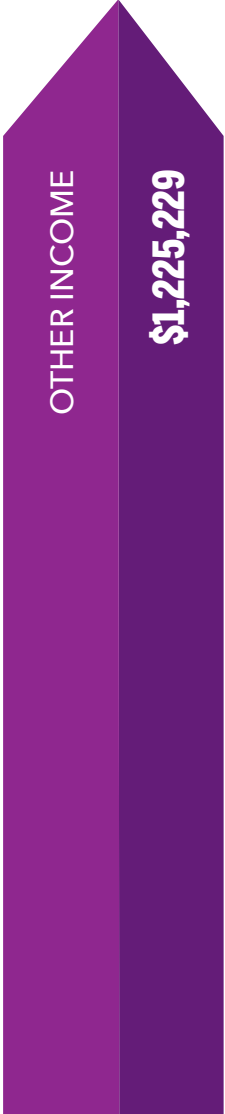
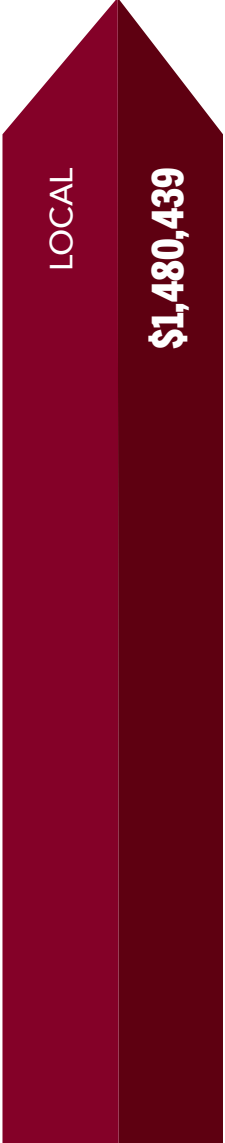
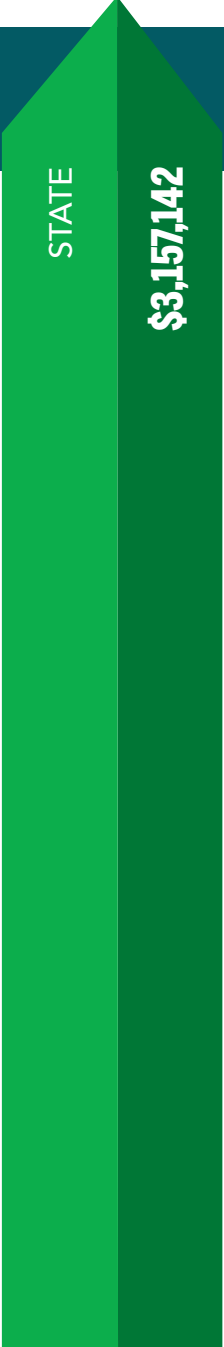
Updated City Limits for
Five Communities

Validated Addresses for
18 Counties

The SGRC Finance division oversees a multi-million dollar budget comprising funds from over a dozen Federal and State agencies. The Finance department is responsible for the maintenance of accounting records and financial reporting in compliance with complex government rules, regulations, and contractual requirements for every dollar received by the SGRC.

FINANCE | FY2020

SGRC REVENUES



SGRC EXPENDITURES

PLANNING AND GOVERNMENT SERVICES | \$575,937

COMMUNITY AND ECONOMIC DEVELOPMENT | \$646,652

TRANSPORTATION AND ENVIRONMENTAL | \$1,741,777

GIS | \$647,927

AGING | \$6,283,074

WORKFORCE DEVELOPMENT | \$3,883,998

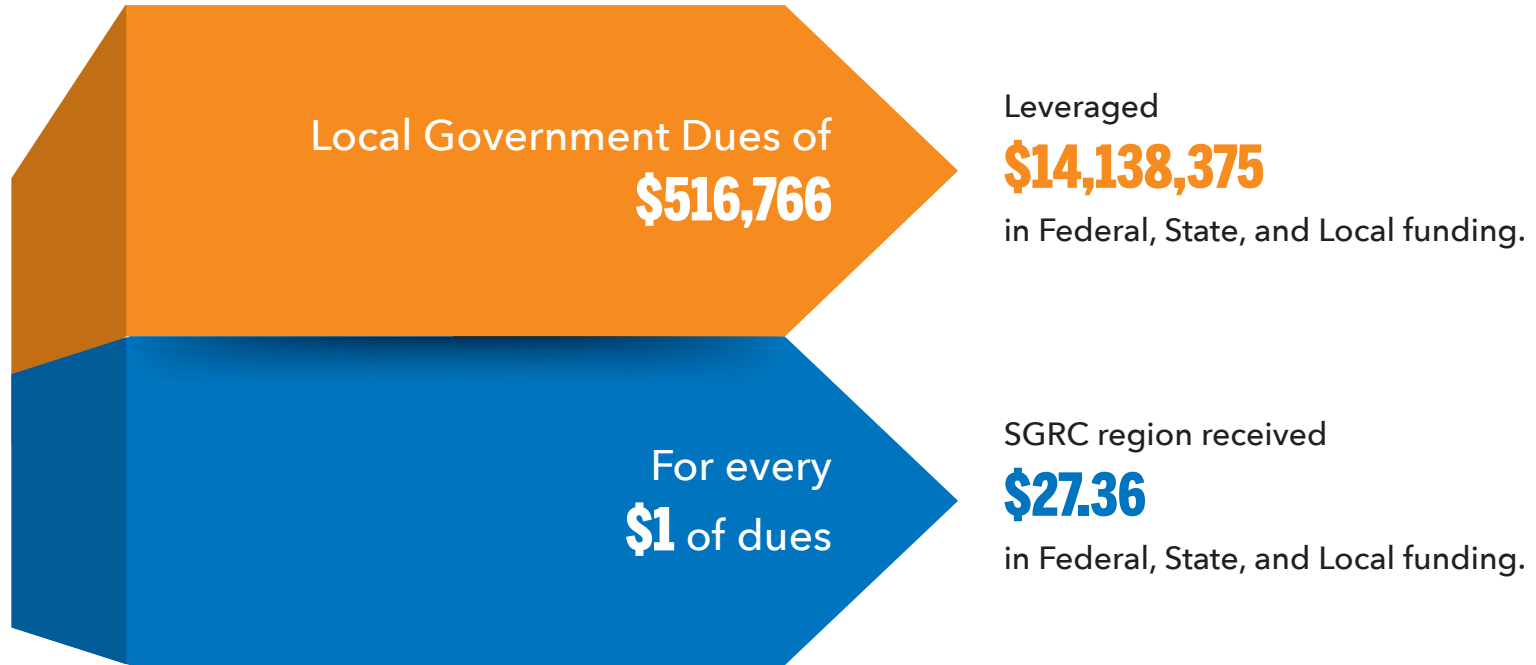
LENDING | \$225,378

ITS | \$558,405

MISCELLANEOUS | \$39,620

TOTAL
\$14,602,768

RETURN ON INVESTMENT



The Information Technology (IT) division provides valuable services to local governments in the region. This division offers professional support for computers, servers, and networks. In addition, IT can assist local governments with the purchase of hardware and software at State contract pricing.

INFORMATION TECHNOLOGY | FY2020



SERVICE HOURS
PROVIDED TO LOCAL
GOVERNMENTS

1,541

SGRC COUNCIL MEMBER LIST

The SGRC leadership and staff are thankful for the excellent guidance and unfailing support of our Council. The dedicated service of each Council member enables the accomplishments of the SGRC's programs and activities throughout the region.

ATKINSON

Lace Futch
Robert Johnson
Janice McKinnon

BACON

Andy Hutto
Larry Taylor
Lisa Coley

BEN HILL

Steve Taylor
Jim Puckett
Jason Dunn

BERRIEN

Ronnie Gaskins
Taylor Scarbrough
Lisa Smart

BRANTLEY

Skipper Harris
Barbara Maefield
Vacant

BROOKS

James Maxwell
Nancy Dennard
Zurich Deshazior

CHARLTON

James Everett
Lee Gowen
Vacant

CLINCH

Roger Metts
Willie Hardee, Jr.
Vacant

COFFEE

Johnny Wayne Jowers
Robert Moore
Adam Smith

COOK

Jeff Lane
Buddy Duke
Derry Bennett

ECHOLS

Kenneth Petty
Cheryl Garner

IRWIN

Joey Whitley
Matt Seale
Mona Paulk

LANIER

Dennis Fender
Bill Darsey
John Fitton

LOWNDES

Joyce Evans
Vivian Miller-Cody
Anthony Payton

PIERCE

Neal Bennett
Kevin Grissom
Andy Brannen

TIFT

Grady Thompson
Julie Smith
Brian Marlowe

TURNER

Nick Denham
Sandra Lumpkin
Vacant

WARE

Vacant
Michael-Angelo James
Barbara King

GOVERNOR'S OFFICE

Norman "Bo" Lovein III
Guy Daughtrey
Jonathan Jones

LT. GOVERNOR'S OFFICE

Keith Stone

SPEAKERS OFFICE

Vacant

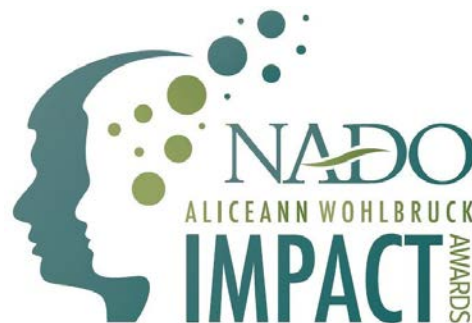
SGRC'S 2019 NADO IMPACT AWARDS

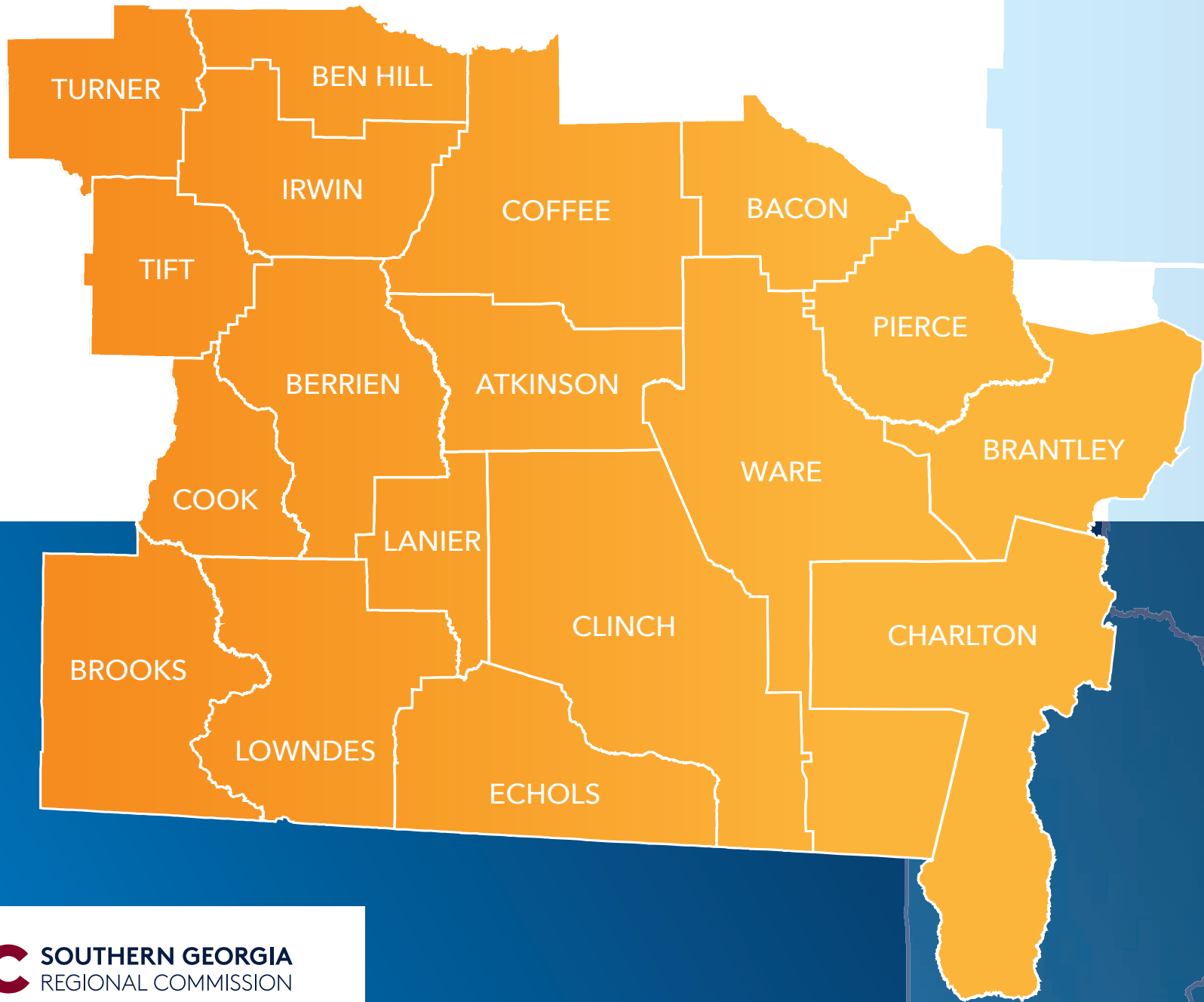
The Impact Awards program honors NADO members for their creative approaches to advancing regional community and economic development and improved quality of life.

Improved
Communication
through a Regional
Mapping Portal

Healthy Living
for Southern
Georgia Seniors

City of Nicholls
Zoning Ordinance





sgirc SOUTHERN GEORGIA
REGIONAL COMMISSION

REGIONAL SERVICES • COMMUNITY FOCUSED